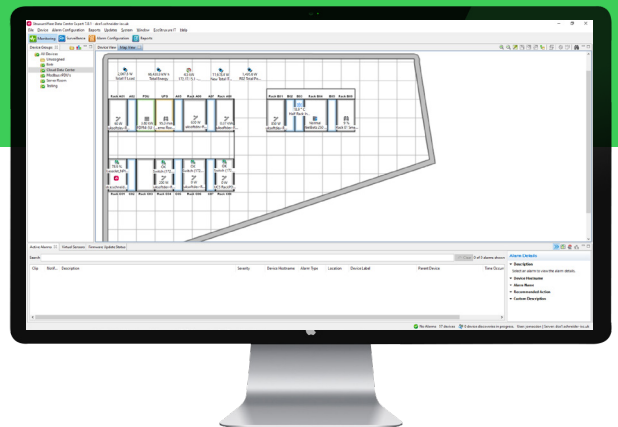




# EcoStruxure™ IT Data Center Expert

Data Center Infrastructure  
Management (DCIM) software

Scalable monitoring software collects, organizes, and distributes critical device information to provide a comprehensive view of your equipment, allowing you to focus on what matters most: efficient uptime and your own personal downtime.



# DCIM software for data center challenges



**Instant fault notification and escalation enable quick resolution of critical infrastructure events.**

With data center management growing more and more complex, Schneider Electric offers a comprehensive DCIM solution. EcoStruxure IT ensures business continuity by enabling secure monitoring, management, insights, planning, and modeling whether from a single IT rack to hyper-scale IT, on premises, in the cloud, and at the edge.

Whether located in a data center, remote office, or campus environment, Schneider Electric's **Data Center Expert** along with power, cooling, environmental, and security devices combine to provide a comprehensive centralized monitoring solution.

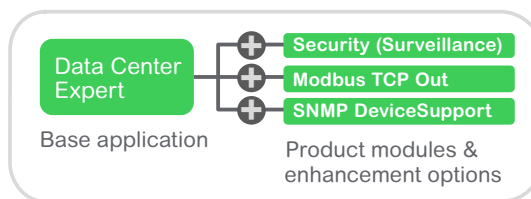
Data Center Expert offers power readings, environmental readings, and camera images from any site on your network which are aggregated into a common management platform. Images and alerts from around the company can be instantly viewed and managed, trends analyzed, and problems averted, providing unparalleled physical threat management.

## Integrated with power and building management

Integrate with Building Operation and Power Monitoring Expert for information on the health of critical support systems in electrical and mechanical rooms as well as power quality and electrical distribution.

## Web Services API

Access Data Center Expert alerts, data, reports, and trends through existing dashboards, or create custom portals for financial, operational, or other views.



Data Center Expert is easy to use and deploy with a user-friendly interface to monitor, manage, and control the hundreds or thousands of devices a company might have from a wide range of manufacturers. These devices include equipment that provides power, cooling, security, and environmental monitoring.

## Centralized monitoring and alerts

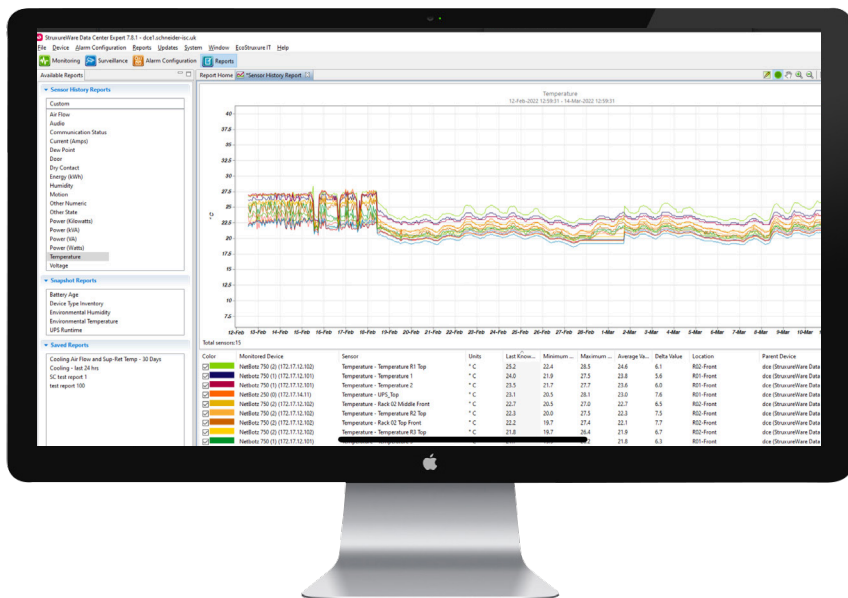
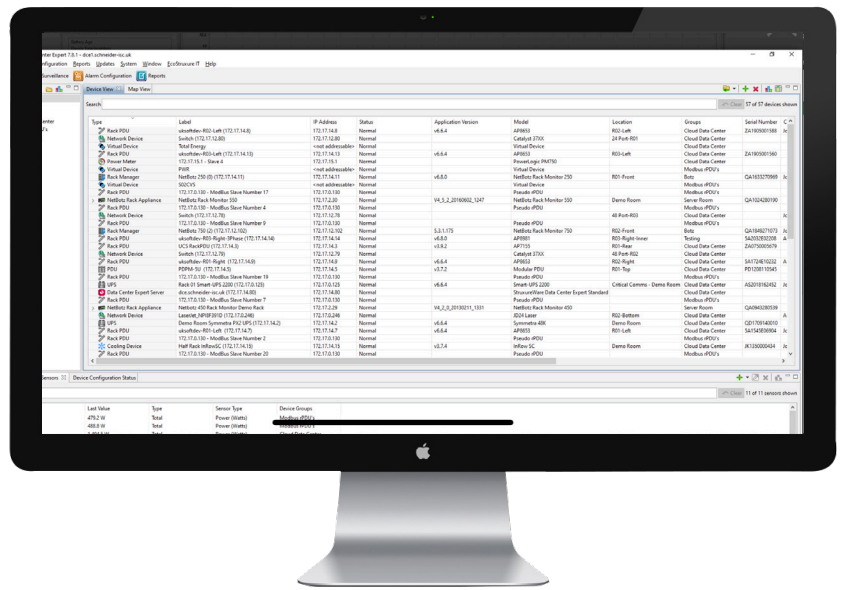
- **Multi-vendor support** for monitoring any networked device from any manufacturer
- **Real-time monitoring** and instant fault notification and escalation enable quick resolution of critical infrastructure events
- **Centralized repository** of critical information accessible by multiple users from anywhere on the network
- **Future trending** for bringing new insights into your infrastructure's health, planning, and budgeting
- **Customized alarming and escalation** by device, by rack, or by location to the right people at the right time
- **Open and flexible architecture** which expands with changing business needs through additional device licenses, add-on surveillance, operations, and control applications
- **Full software developer kit (SDK)** allows for maximum flexibility through custom integration with other systems

# Data Center Expert features and benefits

Monitor and manage an extensive range of Schneider Electric and 3rd party devices to maximize uptime and improve efficiencies.

## Inventory

- Create a consolidated view of the physical data center infrastructure with a centralized repository accessible from anywhere on the network through an easy-to-use console application.
- The inventory shows details for all devices, and provides a quick overview of input/output power, balance, and runtime.
- Drill in further by clicking on the device.
- Multi-vendor support for monitoring any networked device from any manufacturer.



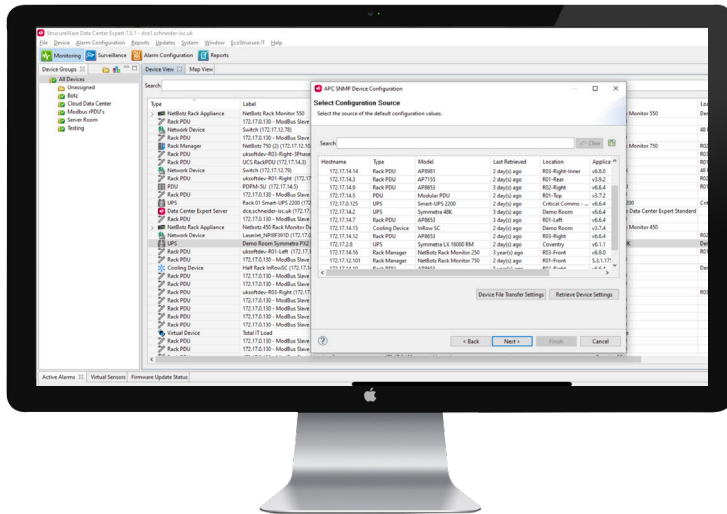
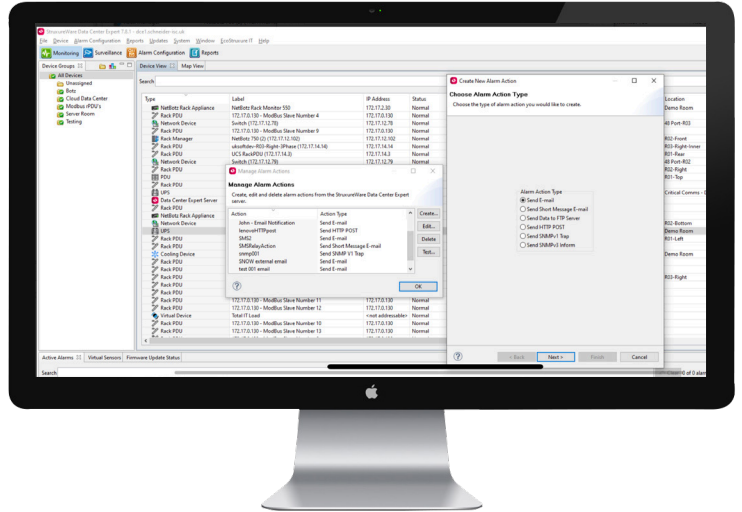
## Availability

- Access current and historic data for devices. Plot and graph multiple data points in a logical correlation to visualize potential hazardous trends.
- Create, save, and schedule user-defined reports for ease of data collection, distribution, and analysis.
- Access historical alerts from several appliances through one central database. Sort alerts by type, date, appliance, and/or device group.
- Additional storage can easily be made available using the built-in Network Attached Storage server support for long-term storage and archiving.

# Data Center Expert features and benefits

## Alarming

- Real-time event notification minimizes response times to critical physical infrastructure situations, enabling IT administrators to reduce mean time to repair, improve efficiency, and maximize uptime.
- Customized alarming and escalation by device, by rack, or by location to the right people at the right time.
- Quickly locate devices and alerts through the free search field.

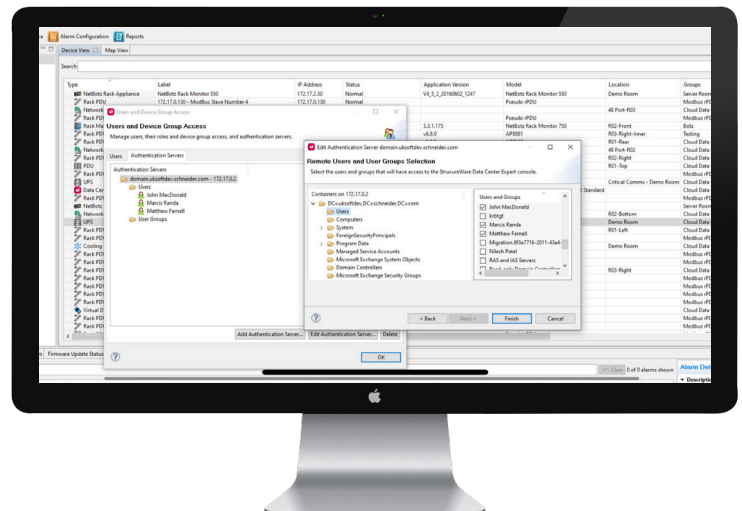


## Device management

- Auto-discovery reduces the time needed to install and deploy physical infrastructure devices by automatically detecting manageable devices on the network.
- The comprehensive mass configuration capability allows users to create, save, and push configurations or specific device settings to similar devices with a Schneider Electric Network Management Card.

## Device security

- 128 Bit, SSL encrypted communications between client and server, as well as encrypted user IDs and passwords stored on the server strengthen cybersecurity.
- Define user access and viewing capabilities to individual groups. Control access to devices by administrator-defined user accounts. Additional user access can be managed by using the built-in LDAP and Active Directory Support.



# Specifications

Specifications	Basic	Standard	Enterprise	Virtual Machine	
SKU	AP9465	AP9470	AP9475	AP94VMTRL	AP94VMACT
Device Support (1 node = 1 IP address)	Up to 525 devices	Up to 2,025 devices	Up to 4,025 devices	Up to 5 devices	Up to 325 devices with (1) CPU and (1) GB RAM Up to 1,025 devices with (1) CPU and (2) GB RAM Up to 2,025 devices with (2) CPU and (2) GB RAM Up to 4,025 devices with (4) CPU and (4) GB RAM
NetBotz Appliance Surveillance Support	Up to 15 appliances	Up to 125 appliances	Up to 250 appliances	Up to 1 appliance	Up to 250 appliances
Supported Device Types	All: UPS Models, Chillers, Power Distribution Units (PDU), Rack PDUs, Computer Room Air Conditioners, Environmental Sensors, Power Metering Equipment, Surveillance Appliances, Static Transfer Switches, Standby Generators				
Building Management System Integration	Yes				
Multi-vendor SNMP and ModBusSupport	Yes				
Power	Single supply		Dual supply	n/a	

## Client System & Web Browser Prerequisites

Operating System	Microsoft® Windows® XP (SP1, SP2, SP3) Windows® Server 2003 (SP2) Windows® Vista, Windows® 7, or Red Hat® Enterprise, Linux® 6.0 (32-bit platforms only)
CPU Speed	1GHz or better AMD/Intel processor
System Memory	1GB RAM
Screen Resolution	1024 x 768
Browser Requirements	The browser must be JavaScript® enabled, Mozilla Firefox® version 12.0, 13.0, 14.0 Microsoft Internet Explorer® version 8.0, 9.0, 10.0 Google Chrome™ version 19.0, 20.0, 21.0

## Communications & Storage

On-board RAM	2GB	2GB	4GB	See "Supports VMware® Fault Tolerance" / "High Availability"
Data Storage	160GB available for data storage	250GB available for data storage	1TB available for data storage	18GB minimum (includes required space for VM image and 1GB of data storage)
Supports VMware® Fault Tolerance	n/a			(1) CPU, (1) GB RAM, up to 325 devices (1) CPU, (2) GB RAM, up to 1,025 devices
Supports VMware® High Availability	n/a			(1) CPU, (1) GB RAM, up to 325 devices (1) CPU, (2) GB RAM, up to 1,025 devices (2) CPU, (2) GB RAM, up to 2,025 devices (4) CPU, (4) GB RAM, up to 4,025 devices
Protocols	DNS, HTTP, HTTPS, SMS, SMTP, SSL, TCP/IP, SNMP			DNS, HTTP, HTTPS, SMS, SMTP, SSL, TCP/IP, SNMP, Modbus TCP
Network Interface Connections	RJ-45 10/100/1000 Base-T Specifications*			

\* All Data Center Expert servers include 25 nodes

# Peace-of-mind software services

Schneider Electric software services are designed to simplify deployment, reduce costs, and address your key concerns and challenges. Our software services give you peace of mind that your applications will receive the attention they need to operate at optimal levels.



## Software installation

Ensures that all software products are installed correctly by a highly skilled field service engineer and are quickly ready for use in your dynamic data center



## Solution deployment management

Provides a single point of contact to oversee the installation, configuration, integration, customization, and enhancement of the DCIM software solution



## Software configuration

Configures the system quickly and precisely to mirror your unique data center, allowing you to make critical decisions that save time and money



## Software preventive maintenance

Grants on-site visits to review, analyze, detect, and prevent system failures while optimizing the DCIM tool



## Software support contracts

Ensures you stay up-to-date with the latest software and technical support



## Software integration

Provides planning, designs, and project management for the integration of EcoStruxure IT software into your existing software or system, providing you with a customized view into your existing applications



## Software enhancement

Provides customized dashboards and reports to meet your business needs



## Software education

Offers hands-on training on key features, operational skills, and best practices, so you can get the most from your DCIM



# Security and monitoring with NetBotz™

Make your IT infrastructure environment safer with our NetBotz intelligent pods, cameras, rack access controls, and sensors. Our scalable solutions help prevent downtime and damage by detecting threats. NetBotz means less worries for you and reduced threats to your valuable IT equipment.



## Benefits

### Environmental monitoring

- NetBotz is designed to protect your IT infrastructure against environmental threats such as temperature, humidity, smoke, and water leaks which pose a significant threat to the company's IT infrastructure.

### Physical security

- NetBotz series provides integrated sensing, surveillance options, and badged rack-access control to help mitigate unauthorized access risks through an array of intelligent sensors, camera clip captures, configurable alerts, and robust management options that help prevent unexpected downtime.

### Flexible solutions

- NetBotz are the industry's most comprehensive, unique solutions for your IT security and environmental monitoring needs offering enhanced security, intelligent sensing, instant alerts, and a robust management system that can be combined to meet your needs from network closets to data centers.

## Features

### Browser accessible

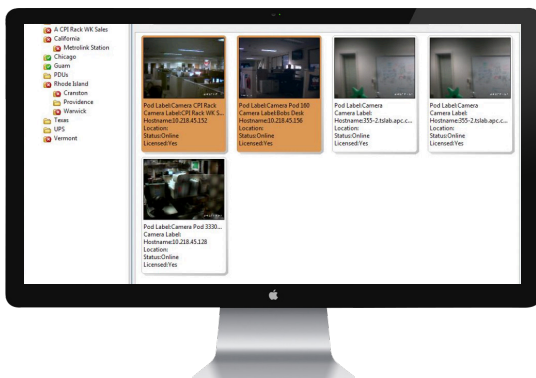
- View the user interface with a browser for quick access from anywhere on a secure network
- Get real-time alerts and sensor data overview
- View multiple camera feeds on a single screen

### Flexibility and adaptability

- Can be the environmental monitoring solution, or the rack access control solution, or both
- Can be mounted in a rack alongside other IT gear, or zero-U mounted in the back

### Manageability

- Integrates with APC racks, NetBotz sensors, and Data Center Expert for easy deployment, configuration, and management
- Customize threshold definitions (multiple thresholds per sensor, scheduling, severity levels) to your requirement



Data Center Expert helps you scale NetBotz quickly.

## For more information, visit

[EcoStruxureIT.com](https://EcoStruxureIT.com)

## For help, visit

[helpcenter.EcoStruxureIT.com](https://helpcenter.EcoStruxureIT.com)

## To learn more

### Read relevant blog posts and white papers

[DCIM 3.0 in 500 words](#)

[WP281, Attributes of Effective DCIM Systems for Hybrid, Distributed IT Environments](#)

[WP170, Avoiding Common Pitfalls of Evaluating and Implementing DCIM Solutions](#)

[WP64 Why Data Centers Must Prioritize Environmental sustainability: Four Key Drivers](#)

## Questions? Contact your National Account Team:

- [Robert de Ciutiis](#): Presidio National Outside Account Manager/Schneider Electric
- [Maggie Dennis](#): Presidio Inside National Account Manager/Schneider Electric

[EcoStruxureIT.com](https://EcoStruxureIT.com)

Schneider Electric  
One Boston Place, Suite 2700  
Boston, MA 02108  
[www.se.com](https://www.se.com)

Life Is On

**Schneider**  
Electric

© 2022 Schneider Electric. All Rights Reserved. Life Is On Schneider Electric and EcoStruxure are trademarks and the property of Schneider Electric SE, its subsidiaries and affiliated companies • 998-22335364

**PRESIDIO**<sup>®</sup>