

## Transform Your Data for AI Success WITH MICROSOFT FABRIC & PRESIDIO



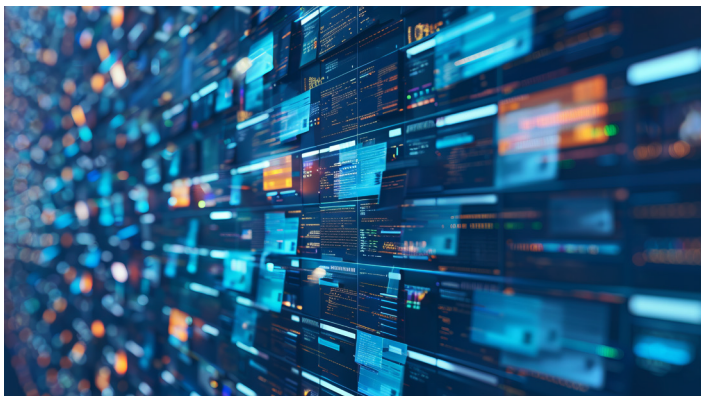
Discover how a unified, AI-powered data platform can enhance decision-making, streamline operations, and unlock the full potential of your data.

### Is Your Data Ready for AI?

In today's rapidly evolving business landscape, the mantra has shifted from "every company is a tech company" to "every company is a data company" and now to "every company should be an AI company." This evolution underscores the critical importance of AI in enhancing the value of data. Most business and IT executives agree that organizations must adopt an AI-first operating model to stay competitive. However, these same executives also acknowledge the need to increase their data platform investments to realize these AI aspirations.

### THE CHALLENGE OF DATA READINESS

Despite the enthusiasm for AI, many executives are unsure about the steps needed to achieve data readiness. Ninety-one percent of data leaders surveyed by Monte Carlo and Wakefield Research are building GenAI applications, but 68% say they're not entirely confident in the quality of the data feeding their LLMs. Clean, accurate, and discoverable data is essential for leveraging AI effectively. Without robust data governance, AI initiatives can become just another technological novelty.



### MICROSOFT FABRIC & PRESIDIO: THE WAY FORWARD

Microsoft Fabric addresses these concerns by providing a comprehensive SaaS data platform. Combined with Presidio's deep expertise in digital transformation, Microsoft Fabric offers an intuitive, consistent, secure, and AI-infused user experience across the enterprise. Fabric helps organizations manage their data in a unified foundation creating a single source of truth for all data. This platform is built on an open, lake-centric foundation, allowing users to access and trust data more easily.

### Why Microsoft Fabric for SMEs

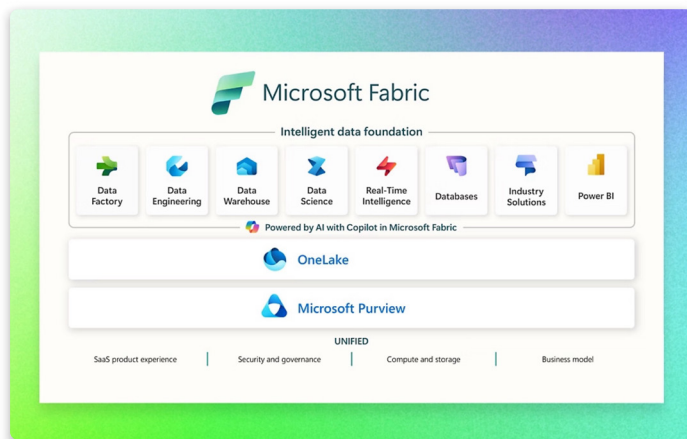
Microsoft Fabric is an excellent choice for small to midsize enterprises (SMEs) due to its cost-effectiveness, scalability, and seamless integration within the Microsoft ecosystem. Its capacity-based pricing model provides predictability, enabling SMEs to budget effectively while scaling as needed. The platform's scalable infrastructure and high-performance open-source Delta Lake storage format ensure SMEs can manage growing data volumes without compromising efficiency. Integration with familiar tools like Power BI and Microsoft 365 fosters collaboration and streamlines workflows, while robust security features and compliance with industry standards offer peace of mind. Additionally, a free 60-day trial and abundant training resources make adoption straightforward, empowering SMEs to leverage advanced analytics and drive growth with minimal risk.

### Large Enterprises Benefit from Microsoft Fabric, Too

For large organizations—Microsoft Fabric can be a valuable addition to their data ecosystem. Fabric provides a unified, deeply integrated platform, offering seamless connectivity with other Microsoft services like Azure Machine Learning and Microsoft Purview and allowing for a more streamlined data analysis experience, especially for users heavily invested in the Microsoft ecosystem. Utilizing SQL Database integration and Fabric's underlying Mirroring capabilities reduces the need for integration tools and provides near real-time access to data from a variety of Azure databases and external data sources (e.g., Snowflake), potentially eliminating data silos.

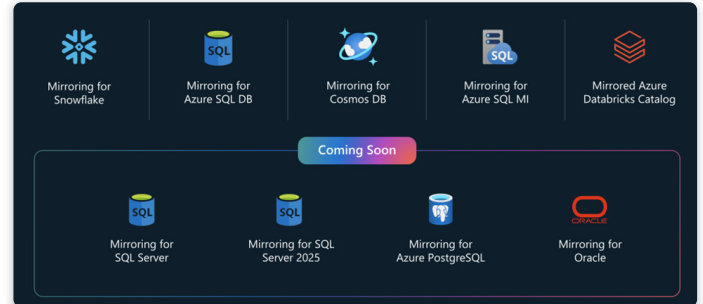
## Transform Your Data for AI Success

By reducing the management burden of data analytics components, Microsoft Fabric enables all organizations to adopt and use it immediately to solve business problems and optimize data value.



### KEY BENEFITS OF MICROSOFT FABRIC

- 1. AI-powered:** Infused with Azure OpenAI Service, Microsoft Fabric helps users unlock the full value of their data responsibly. Copilot in Microsoft Fabric enables business users to create data analytics systems and visualize results using conversational language.
- 2. Complete analytics platform:** Microsoft Fabric provides a unified experience and architecture focused on Power BI, empowering every team in the analytics process with the role-specific experiences they need.
- 3. Lake-centric and open:** Microsoft's open-source data lake, OneLake, eliminates the need to manage and sync replicated data across multiple silos, providing a single source of accurate data (delta, unstructured and structured) with built-in elasticity and auto-scaling capabilities, ensuring data ownership and changes to future technologies if needed.
- 4. Empowers business users:** Deep integration with Microsoft 365 applications allows companies to adopt and accelerate a data-ready decision-making culture.
- 5. Cost reduction:** Microsoft Fabric streamlines computing capacity costs by allowing users to purchase a single pool of computing power for all workloads, optimizing resource utilization.
- 6. SQL database integration:** This developer-friendly transactional database, based on Azure SQL Database, allows users to easily create operational databases in Fabric.
- 7. SQL, Snowflake and Databricks Mirroring:** With this feature, users can replicate their existing data sources directly into Fabric's OneLake, potentially eliminating data silos.



### MICROSOFT PURVIEW: PREPARING YOUR DATA FOR MICROSOFT FABRIC

To maximize the benefits of Microsoft Fabric, organizations need high-quality, secure data aligned with a unified data governance policy. Microsoft Purview addresses data governance challenges by providing a single, business-friendly, integrated SaaS solution. It empowers organization-wide functions and users to manage, discover, and access data wherever it resides.

Microsoft Purview offers comprehensive data mapping and cataloging, metadata management, AI-powered automation, and seamless integration with Microsoft Fabric. This reduces the technical burden and allows organizations to democratize data use confidently.

### Key Features of Microsoft Purview (and How it Complements Fabric)

- 1. Federated approach:** Purview complements the Fabric OneLake catalog, providing comprehensive data governance and security capabilities, allowing users to discover, classify, and manage data assets within the Fabric environment.
- 2. AI integration:** Purview's AI integration significantly benefits Microsoft Fabric by helping users govern their data within Fabric more accurately and efficiently, leveraging AI-powered analysis.
- 3. Robust compliance and security:** Purview's advanced tools for monitoring data estate health, enforcing policies, and generating compliance reports help organizations stay ahead of regulatory demands.

## Transform Your Data for AI Success

### See Presidio at Microsoft FabCon 2025

The second annual [Microsoft Fabric Community Conference \(FabCon\)](#) is coming to the MGM Grand in Las Vegas March 31 – April 2, 2025.

[Contact the Presidio team](#) to meet in person.

### JOIN PRESIDIO FOR AN INFORMATIVE MICROSOFT FABRIC AND AI STRATEGY WORKSHOP

Presidio offers a 1/2-day workshop designed to help you understand your options for modernizing and optimizing your data infrastructure in Azure. This hands-on workshop, facilitated by Presidio's Data and AI Solution Architecture team, covers topics such as organizational goals, data management, effective governance, data platform strategy, data integration, and BI/AI analytics.



### Workshop Benefits

Participants will gain immediate value and insight, including:

- ◆ **Unified analytics platform:** Understanding Fabric's all-in-one analytics capabilities
- ◆ **AI and automation integration:** Leveraging Fabric's embedded AI and automation tools
- ◆ **Comprehensive data lake:** Utilizing OneLake to consolidate organizational data
- ◆ **Flexible, cost-effective architecture:** Adopting Fabric's SaaS foundation for a pay-as-you-go model
- ◆ **Customized strategy and roadmap:** Receiving a tailored action plan to maximize Databricks' value aligned with business goals

### Key Workshop Outputs

- ◆ Strategic data and AI vision
- ◆ Foundational knowledge
- ◆ Security and governance
- ◆ Gap analysis and priority areas
- ◆ High-level roadmap



**Schedule Your Free Fabric Workshop.** Contact Presidio today ([dlimsftcampaigns@presidio.com](mailto:dlimsftcampaigns@presidio.com)) to schedule your Microsoft Fabric workshop and start your journey toward a modern, AI-ready data

infrastructure. Let us help you unlock the full potential of your data and drive your business forward with AI.